

elite classic

wireless home energy monitor

efergy®

Monitor your home energy use



Instantly see the cost of using energy in your home



View your daily, weekly, monthly or average data



Uses multiple tariff options



Discover and reduce your carbon footprint



Learn about energy with your family



EU



UK



USA



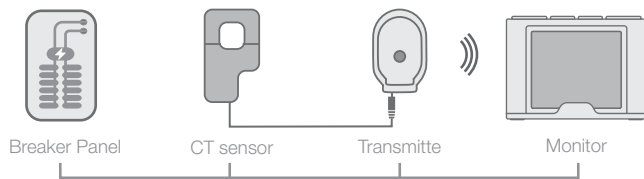
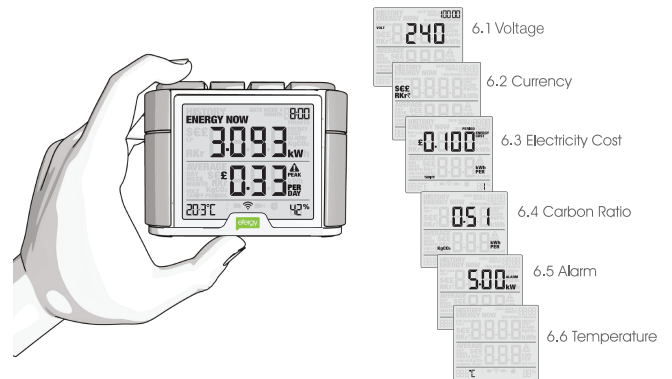
AU

elite classic

wireless home energy monitor



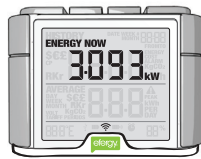
Our **elite classic** electricity monitor is simple to install and easy to use. A CT sensor is clipped on to the live feed of your breaker panel. A lead from the sensor and a mains adaptor are plugged into the energy transmitter, which then wirelessly sends real time data to the energy monitor. The monitor converts the data and displays the demand in kilowatts of energy being consumed at any given time. The **elite classic** monitor may be programmed for various rates, ensuring that the cost of your energy is accurate.



Key features

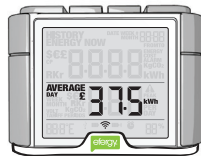
Instant savings

The **elite classic** shows how much energy is consumed in real-time and how much it will cost if the 'energy now' load is maintained for a period of one day.



Average data

The **elite classic** displays your average energy usage per day, week and month. See the impact of your energy efficient efforts and then watch your average energy usage reduce.



Memory function

The **elite classic** memory function allows you to view your energy usage by the day, week or month. The **elite** helps you understand your energy usage and how it changes over time.



Easy to install

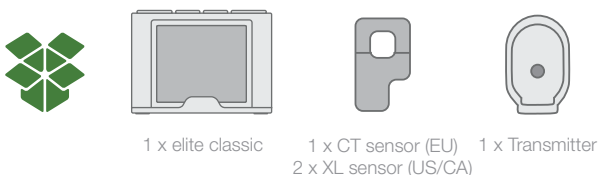
1. Clip the mini CT sensor around the live feed of your electrical panel.
2. Plug the sensor into the transmitter.
3. Press **link** on the back of the **elite classic** monitor (signal symbol will flash), then press **learn** on the transmitter.
4. Signal symbol becomes solid when the installation is successful. Use the **elite classic** to review energy usage instantly.

Technical details

Model Name:	elite classic
Model Number:	ELITE-4.0
Frequency:	433MHz
Transmission Time:	10-15-20s
Transmission Range:	110-600V
Measuring Current:	50mA-90A
Accuracy:	>90%
Dimensions:	107x30x77mm



What's in the box



If you have any question about the **elite classic**, email us at: support@efergy.com

Sales & Distribution:

Email: sales@efergy.com

www.efergy.com

